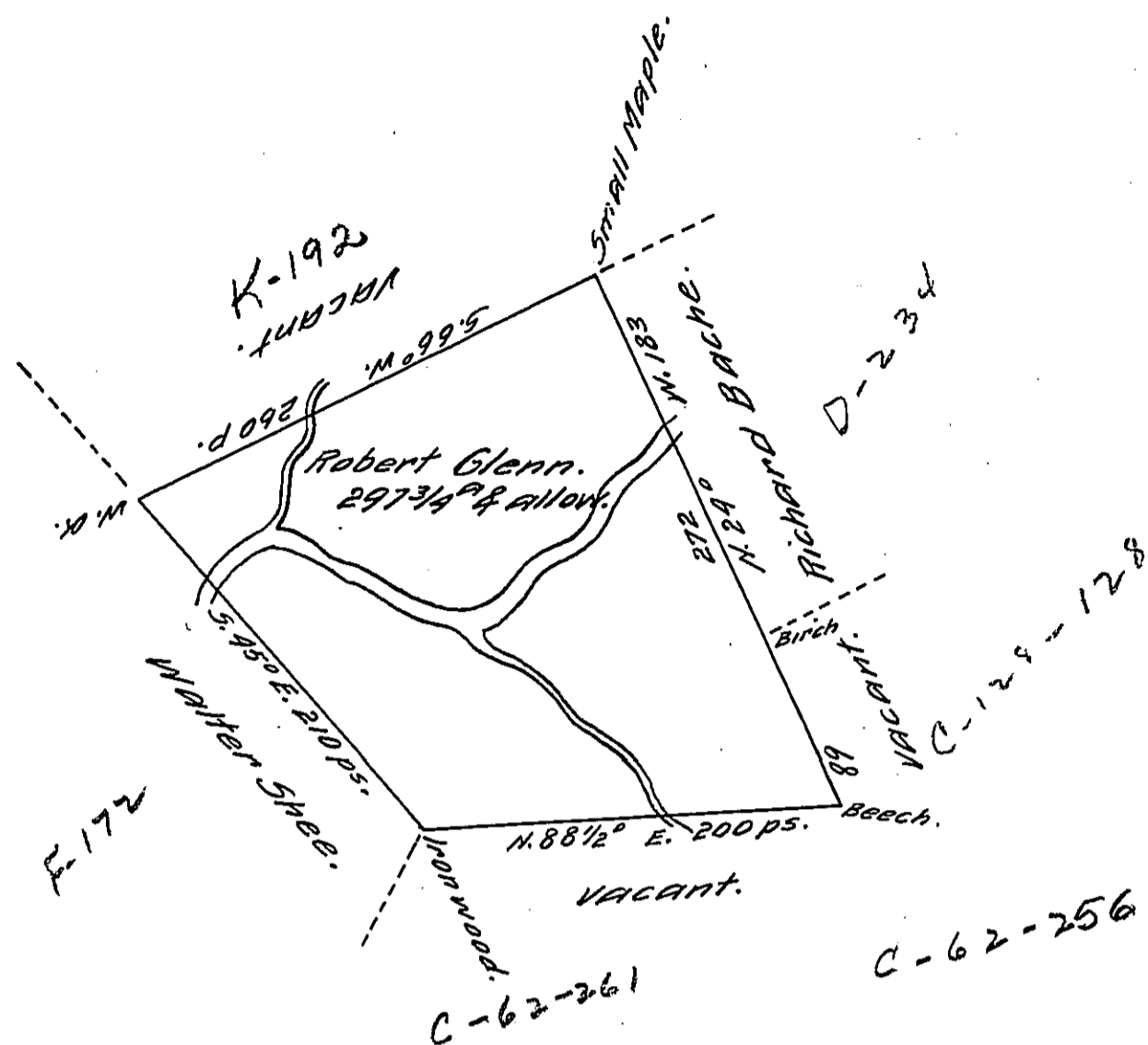


FORM NO. 1.



A Draught of a Tract of Land Called — Situate in
 Wyalusing Creek adjoining and above Land Surveyed
 to Walter Shee in the County of Northumberland.
 Containing two hundred and Ninety Seven Acres and
 three Quarters of an acre, besides the usual allowance
 of Six per cent for Roads &c. Surveyed the 9th Day
 of November 1774. for Walter Stewart. In pursuance
 of a Warrant Dated the 17th day of March 1774.
 To John Lukens, Esqr Surveyr. Genl. by Chas. Stewart Dy. Surv.

IN TESTIMONY that the above is a copy of the original remaining on file in
 the Department of Internal Affairs of Pennsylvania, made
 conformably to an Act of Assembly approved the 16th day of
 February, 1833, I have hereunto set my Hand and caused
 the Seal of said Department to be affixed at Harrisburg,
 this thirteenth day of September 1911

Henry Howell,
 Secretary of Internal Affairs.